

Catapult Learning Family Connections



Approved for Title I Funding *under ESSA!*

Connecting Schools and Families to Support Learning

Research shows that students whose families are involved in their education achieve greater academic success.

We understand the importance of building positive working relationships between schools and families. To facilitate this partnership, we've created Family Connections, a unique program designed to strengthen the relationship between schools and families to meet the specific learning needs of their children and improve academic outcomes.

Family Connections provides support to families and educators to help them assist students as they grow and develop. Our program combines education, guidance, and resource advocacy services to provide families the necessary tools to support their children's learning needs and help them become further engaged and involved in the educational process, along with professional development opportunities for school personnel to provide the strategies and knowledge necessary to support students and engage with the families and community.

We start with a collaborative needs assessment, and use the results to create a unique plan to support families, teachers, staff, and school leadership. Each program includes three components: Family Engagement & Education, Professional Development for Faculty & Staff, and Consultation & Community Referral Network.



“ Our Family Connections School Community Liaison is invaluable. The program has broken down barriers that existed between home and school. ”
— Principal, Philadelphia, PA

Program at a Glance



Collaborative Needs Assessment

Family Engagement & Education

Workshops & Resources to Help Families Support and Advocate for Their Students



Professional Development for Faculty & Staff

Workshops & Resources Designed to Promote Effective Ways to Better Understand & Engage Families



Consultation & Community Referral Network

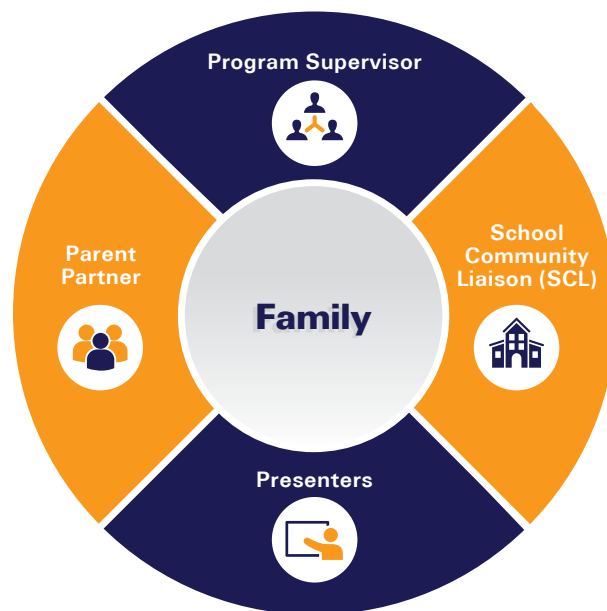
Consultative Services and a Local Network of Community Partners to provide Support Services



Program Teams

Managed by a **Program Supervisor**, each Family Connections program includes a team that features:

- **School Community Liaison (SCL)** – Organizes programming and coordinates scheduling. The SCL is often a trained counselor or licensed social worker.
- **Parent Partner** – A member of your community who plays a critical role helping to engage families in the program.
- **Presenters** – Content experts and engaging facilitators specifically trained to deliver workshops to families and school faculty.



Creating Strong Relationships and a Positive Learning Environment

Mandarin-Speaking Students and Parents Get the Support They Need

Parents tend to feel more comfortable with staff that they feel are relatable. For example, when we placed a Mandarin speaker at a school with 98% Mandarin-speaking students, it made a difference when progress reports were distributed and someone could explain what they meant!

Administrator and School Community Liaison Handle Sensitive Issues Together

In the role of administrator, I often come across situations that I do not always feel qualified in handling alone. While I focus my attention on the basic operations of the school and curriculum issues, I consider myself quite fortunate to have our Family Connections School Community Liaison to rely on for assistance with students and families.

School Principal Gets Help Dealing with Crises, Homelessness and Gun Violence

The team at Catapult has been able to provide us with a wealth of resources to help deal with problems that have arisen this year, ranging from teenage homelessness to gun violence. In times of crisis, it is most important to have quick access to effective tools, and Catapult has provided us with just that.

Deaf and Non-English-Speaking Parents are Empowered with the Help of an Interpreter

Our school had a first-grade child of two deaf parents. When his parents enrolled him, they were very mistrusting and unable to understand the hearing world. The Family Connections School Community Liaison connected with the parents and found resources to support them and their child both in and outside of school. Since the interventions, the parents were empowered and the student's work and behavior were improved.