

Transforming Climate and Culture

The Case for Climate and Culture Shifts in Schools

Catapult Learning solutions strengthen the whole student through an intentional focus on developing executive function and resiliency skills. The development of these critical skills is essential to engaging and inspiring students. Impactful and persistent resiliency skills are not simply discussed in a class period or delivered exclusively as direct instruction; rather, improved climate and culture is fully embraced and modeled by staff, infused throughout the school, and normalized in the school's culture through equal participation from staff and students. By helping staff become aware of their own competencies, they will be able to evaluate their own approach to their students and their work.



Teachers feel unprepared to manage disruptive behavior¹

Surveyed teachers **estimate losing nearly two and a half hours** of learning time each week to behavioral disruptions. Over the course of a standard academic year, this adds up to almost **three weeks of lost instructional time**.

INSTRUCTIONAL TIME LOST TO BEHAVIOR DISRUPTIONS:

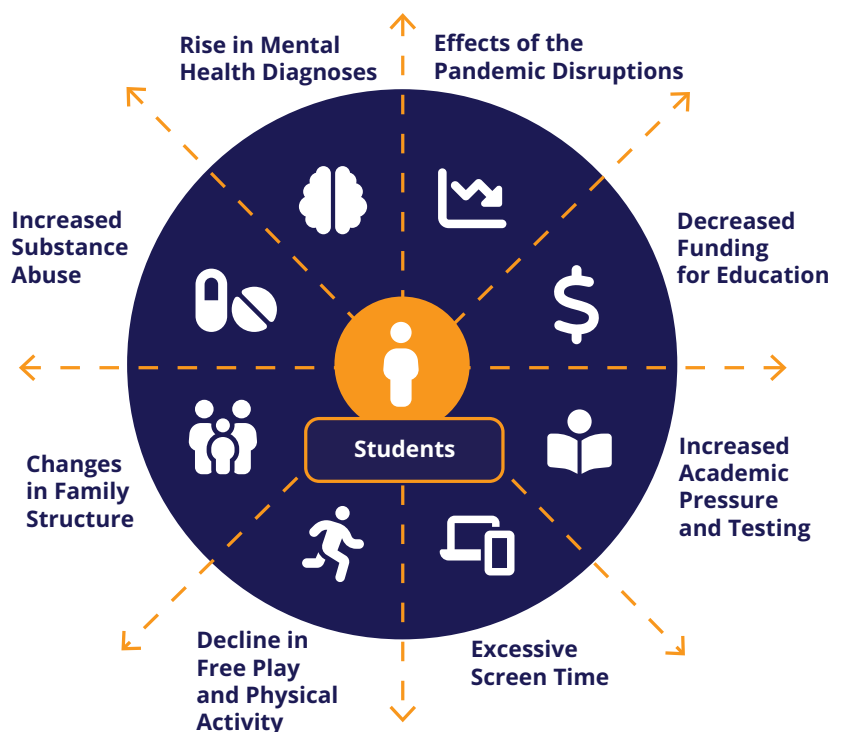


144 MINUTES
PER WEEK



14.5 SCHOOL DAYS
PER YEAR

External Factors Leading to Increased Classroom Disruption



¹ EAB Global Inc. (2019). Breaking Bad Behavior; The Rise of Classroom Disruptions in Early Grades and How Districts Are Responding. Retrieved from <http://pages.eab.com/rs/732-GKV-655/images/BreakingBadBehaviorStudy.pdf>

Our Approach

We believe that a school's climate and culture should not be yet another check-box item rather, we offer students daily immersive experiences that promote student's social-emotional development as they move through the school day. Our comprehensive professional learning program for Transforming Climate and Culture explores the tenets of our proven-effective school-design model and support schools in determining which of our tools and strategies are best suited to their unique needs and local context.

At the heart of our approach is an essential set of theories, practices, and tools. Catapult Learning's unique school design framework reflects scientific research and represents practical, real-world implementation. These core elements represent a replicable, scalable, and flexible model that helps districts strengthen their schools. By creating a strong, student-centered culture of engagement and belonging on campus, partners are able to foster deeper relationships and improved academic achievements.

Courses Include:

- Beliefs and Posture
- Roadblocks to Student Learning
- Hidden Forces of Group Dynamics
- High-impact Structures and Tools
- Action Plan for a Positive Peer Culture

Single Engagement



PHASE 1

Baseline Assessment, Goal Setting, Professional Learning Experience



PHASE 2

Ongoing Coaching by Expert Practitioners



PHASE 3

Analysis and Post-implementation Planning

- **Whole-child Approach**
Identify and address student needs with a caring, nurturing posture
- **Immersive Social-emotional Skill Building**
Develop meaningful relationships and engagement while developing self-awareness, self-management, pro-social skills, and responsible decision making
- **Student Voice and Student Agency**
Develop goals and purpose along with communication and self-advocacy skills to help achieve them; contribute to and help re-enforce pro-social norms in and outside of school
- **Trauma-informed Practices**
Move students from a survival mindset (i.e., fight, flight, freeze) to a learning mindset
- **Evidence-based Pedagogy**
Universal instructional strategies to improve student engagement

